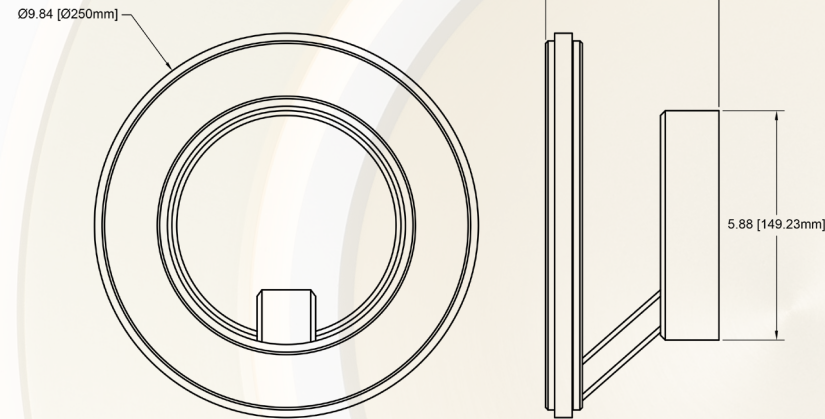


Electron



Size



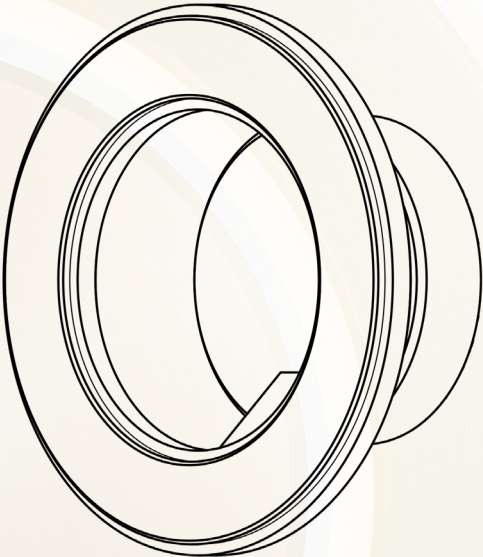
Electron Wall Sconce

Description

The Electron sconce reflects efficient engineering without compromising beauty or functionality. Like the subatomic particle, the light is deceptively simple, but as you delve deeper its ingenuity is revealed.

Standard size of the Electron sconce is 9.84" (250mm) Diameter and 5.875" (149.23mm) deep. Driver is integrated into the wall sconce and a dedicated mounting plate is provided to attached sconce to a standard J-Box. Sconce can be made to be ADA compliant.

Designed by Maurice Dery and Jordan Dery



Model Number

Example : Electron - WS09 - 30LV - 01G1 - GLAGLA - 01PH

Name	Style	Size	Color Temp	Power	Quantity	Canopy Style	Fixture Color	Canopy Color	Lumen Output	Dimming Options
XXXXXX	PN - Pendant CH - Chandelier WS - Wall Sconce FL - Floor Lamp T - Table Lamp	09 - 9 " Dia	27 - 2700K 30 - 3000K 35 - 3500K	AC - Line Voltage (120V 60Hz) LV - Low Voltage GL - Global Voltage (200 - 240 50Hz)	Number of pendants and or light sources. 01 - One pendant / light source	Various canopy options available including standard options and custom canopy requests. See Canopies and Suspension page for all options. For example G1 - Cleat J - Box Wall Mount	GLA - Gold CLA - Clear BKA - Black	GLA - Gold CLA - Clear BKA - Black	01 - Standard 02 - Hi Output 03 - Custom	PH - Phase Dimming 10 - 0-10 V Dimming ELV - ELV Dimming DALI - DALI Dimming

Note: Not all options are available for all models

Specifications

Specifications	Standard Lumen Output
Voltage Wattage Lumen Output (Source) Light Source CRI	12 VDC 11.6 Watts ~880 Lumens Karice LED Tape 80+ CRI

Finishes

Standard finishes available, Custom finish options available upon request



GLA
Light Gold
Anodized



CLA
Clear
Anodized



BKA
Black
Anodized